

## Counties Partners

If you would like to receive our monthly Praise and Prayer diary, please email the Office or complete and return this section to: **COUNTIES, 30 Haynes Road, Westbury, Wiltshire BA13 3HD**

### Subscribe

Please begin sending me Counties News regularly

by post (address below)

Please begin to send me the monthly Praise and Prayer diary

by post (address below)

by email

## My Details

Mr/Mrs/Miss/Ms/Other
Surname
Forename(s)
Address
Postcode
Telephone

## Have we got your email?

We may have your postal address but not your email. By letting us have it you can receive regular news & updates.

Your details will be kept on our database and may be shared with a local COUNTIES Evangelist, but with no other person or organisation.

Please remove me from your mailing list

## My Gift

I would like to partner with COUNTIES. Please find enclosed my/our Gift of

(please make cheques payable to Counties)

### Gift Aid

This is a Gift-Aid donation (We will send you a gift-aid declaration, if you have not already completed one).

I would like to set up a regular standing order.

Please send me an Information Pack on Wills and Legacies.

# A Partnership of strengths

**At the start of Martin Erwin's evangelistic ministry, his wife Rachel was able to work alongside him on most of his activities, for example running camps together.**

However, the balance of their partnership changed when they became parents. Rachel took on the role of the primary carer, but is still effective in supporting Martin with admin tasks and taking on responsibilities within the church.

Allowing your partner's strengths to complement your own is a key part of a successful partnership. Martin says, "Rachel has the quality of being very level-headed. She brings a balance to our relationship, allowing me to pursue a variety of opportunities, with the ability to move from one thing to another, able to rely on her dependability."

Rachel and Martin work together in a variety of ways. Their home group run is at their neighbour's house, with Rachel leading the discussions if Martin can't attend; and an after-school club is another great example of how Rachel complements Martin's ministry. While Martin takes on the up-front aspects of the club, playing guitar and telling the stories, Rachel prepares the craft activity and puts

together PowerPoint presentations to aid the storytelling.

Taking time to recharge the batteries is essential if you don't want your partnership to get burnt out. It's important to spend time together relaxing, so that your relationships aren't all about the work. Martin & Rachel try to spend at least one evening a week together without any distractions - difficult when you can't always find someone to cover the childcare! "We relax with a takeaway or watch a film, but more importantly we make sure we discuss the challenges and encouragements we've come across in our day. This allows us to deal with struggles as a team and give God praise for his blessings."

It is also important that Partnerships be 'inclusive' rather than 'exclusive'. With this in mind, Martin & Rachel help with the running of Challenge Community Church, work alongside GLO teams, who themselves are serving God internationally, and at the time of writing were organising a 'Make Jesus Known' event with other churches in Hereford.



**Martin & Rachel Erwin**  
Hereford  
T 01432 268 218  
E Erwin@countiesuk.org



## North-East Counties Weekend "A Vision for Mission"

**Saturday 15th October 7-9.00pm**

- Regent Chapel Christian Fellowship, NE33HD

**Sunday Services 16th October**

- David Brown at Edgewell Christian Centre
- Paul Willmott at Hillheads Community Church
- John Wilkes at Regent Chapel Christian Fellowship

More details from Counties Office.

## Looking for an opportunity to serve?

### LIFE Exhibition helper

A volunteer helper is required to assist the setting up and dismantling of the LIFE Exhibition.

Commitment could be up to 40 days per year, during school term time but any time which can be offered would be greatly appreciated. Whilst this is a volunteer role, Counties offers a modest daily gift for time spent and will also reimburse travel expenses.

### Requirements of the role

- good general health/fitness
- reliability
- practically minded
- flexibility inc. some long days and very occasional overnight stays
- licensed & willing to drive 7.5 tonne lorry
- ideally living close to Wiltshire (or if further a field - able to store the lorry between venues)



GSUS Live is a mobile classroom with a multimedia computer suite designed to guide students through a programme of understanding the Bible's teaching on FEAR, FORGIVENESS and REJECTION.

GSUS Live Diary

- Sept/Oct Braintree & Cardiff
- Nov/Dec (Mark 1 pod replacements) & Exeter

For a list of schools or to arrange a visit please visit [www.gsuslive.co.uk](http://www.gsuslive.co.uk) or call Steve Parry 01633 889 052.



## Working in partnership is a thread that runs through the whole ministry of the LIFE Exhibition in so many ways.

More than anything else we are in partnership with God. All of us are in partnership with the Lord as we serve him. He chose to work through mankind to accomplish his gospel mission on earth. To borrow a biblical metaphor, we are the workers cultivating and harvesting his fields.

But partnership is important to LIFE in many other ways also. A key partnership is the one between Counties who provides the LIFE exhibition, and the local hosting church or group. And so often, the hosting of LIFE locally is a partnership of local Christians working together from different churches, offering their gifts, time, money and prayer to ensure a successful week.

The Counties LIFE Team is also a partnership, with the LIFE Committee made up of volunteers and Counties Evangelists helping to steer the development and operations of the LIFE ministry. Carol Dadswell and Roger Brind help with Training, Mick Cox and Paul Osborne have been a huge support helping to set up and dismantle around the UK, and the Office Team is an invaluable

support and encouragement.

And of course you also play your part - partners in prayer and in your practical and financial support. The Friends of LIFE scheme is playing an important part in financially helping us to continue making it available for those that wish to host LIFE in their communities. If you want to partner with us in this way, a form can be downloaded from [www.CountiesUK.org/resources/life-expo.html](http://www.CountiesUK.org/resources/life-expo.html)

Thank you for your partnership in so many ways!

Please pray for the Exhibition as we begin our Autumn Tour of Northern Ireland in September:

- 18 - 25 September 2011  
Portrush, Dunluce Christian Fellowship
- 26 Sept - 4 Oct 2011  
Enniskillen, The Stables
- 5-14 October,  
Scrabo Hall, Newtownards
- 15-22 October  
Bethany Church, Finaghy, Belfast

For further information about the exhibition contact:  
Martin Buckley  
LIFE Exhibition Co-ordinator  
30 Haynes Road, WESTBURY, BA13 3HD  
T: 01934 835205 mob: 07968 705623  
E: martin.counties@tiscali.co.uk

**The LIFE Exhibition is a unique, interactive, mobile exhibition, exploring the life of Jesus and his impact in the world today.**

**Counties exists to present 'Life in all its fullness: locally & nationally' through our full time Evangelists, exhibitions and resources, in Biblically faithful and culturally relevant ways.**

Address: Counties 30 Haynes Road, Westbury, Wiltshire BA13 3HD  
Telephone: 01373 823 013 Email: [office@countiesuk.org](mailto:office@countiesuk.org) [www.countiesuk.org](http://www.countiesuk.org)

We are glad to be able to make Counties News available free of charge. (It costs approximately £5 per year to produce and distribute six editions) Every additional contribution will help us to present "Life in all its fullness: locally & nationally". Thank you for your valued partnership.



# Counties news

Life in all its fullness: locally & nationally



August - September 2011

Issue 47

## IN THIS ISSUE



Neither Jew nor Greek (In Christ)



Friendship through marmite



Partnerships in prayer



A Partnership of strengths

# Together in Ministry

## Wearing surgical scrubs, hats and boots, Su and Mike were setting up the video cameras and equipment in an operating theatre in Addenbrookes Hospital, Cambridge.

The surgeon sat on the operating table and talked of how his Christian faith affected his life and work.

That was the easy bit. Editing the videos and transforming these and Mike's scribbled drafts into exciting lessons for the RE:Quest website and the 'Reflections' DVD has taken Su two years of hard work. Finally, they are now ready to mail the finished result to every secondary school in the U.K. to show the vibrant reality of Christian faith to a lost generation - but it has taken a lot of teamwork.

Shortly after Mike & Su joined Counties, Su was asked to take a ladies meeting. The answer? No. Su doesn't 'do' platform ministry "Su and I have always worked together, but our gifts are completely different", says Mike.

"For me, running the RE:Quest website involves working with others to write/video/photograph new materials that meet educational needs and present the Good News in new and creative ways. For Su, it means working with computer code and programmes to turn this into brilliant resources."

Every day, Su updates the RE:Quest website, responds to e-mails from the public and deals with the post. Mike admits, "I would rather be in schools sharing Jesus with children or training teachers than engage in such extreme forms of torture - but without Su, everything would collapse in a muddle."

"When preparing sermons and services I will drop some scribbled sheets of paper into Su's 'In-tray', and she transforms them into a dynamic PowerPoint and neatly typed sheets, complete with a theology check and fresh ideas."

For Mike & Su it hasn't always looked like this. Over the years, changing ministries and changing family life have altered the way they have worked together. What has remained constant is that they are in the work together. "Our skills complement rather than conflict. Within marriage, and within the church family, we need to recognise that our differences are a strength, not a weakness, and that we should value each other for who we are."



**Mike & Su Strange**  
T: 01278 661 036  
E: [strange@countiesuk.org](mailto:strange@countiesuk.org)



# Essential partnerships

**“Finally, my brothers, rejoice in the Lord! It is no trouble for me to write the same things to you again, and it is a safeguard for you.” (Phil. 3:1)**

And no excuses from me, either, for writing the same things over and over again. Let’s celebrate PARTNERSHIPS again! Don’t let the beautiful word and idea be distorted by ungodly associations! “I thank my God ... because of your partnership in the gospel from the first day until now ...” (Phil. 1:3-5)

Isn’t it amazing that God has called people like us into a Divine Partnership with Himself in eternal purposes? Isn’t it a privilege that every day we can draw on Heaven’s wisdom and Holy Spirit energies to live our ordinary lives in extraordinary ways? Isn’t it brilliant that God has given Counties so many Partners, like you, who stand with us in prayer and practical support? Isn’t it wonderful that so many Evangelists are working in pairs!

All of our male Evangelists want to acknowledge and celebrate the special part that is played by their wives, whilst our female Evangelists also carry out distinctive ministries! As we highlight the roles of some wives who are fully involved in Evangelism, we recognise that many Counties folk work as whole families. What

brilliant, multi-faceted partnerships! However, we have an ongoing challenge, which could develop into a crisis.

Every Evangelist needs a special group of very close partners, and whilst some local groups are functioning very effectively, others are really struggling in this area.

Counties Evangelists need spirit-filled men and women who are genuinely concerned for their welfare and truly committed to their work. These treasured partners take an active interest with an occasional phone call or an informal coffee. They will be close enough to spot when the Evangelist(s), or their families, are under particular pressures. They will ‘champion’ their work and help to make connections with prayer partners or partnering Churches. They may provide advice or counsel, or simply be a sounding board for the next radical project!

If you have a special interest in one (or more) Counties Evangelist, could I please make a suggestion? Could you phone them and ask how their ‘Counties Link Group’ is functioning? They might actually need your help and support in developing or strengthening this vital local partnership.



Thank you.

John Wilkes  
Counties CEO

## FACE TO FACE

**Consultation Training with providers & church leaders**

Tuesday 4 October  
Hollywood Centre, Birmingham

**‘Cafe Counties’**

Sunday 9 October at 3:30pm  
Alexander Evangelical Church, AL2 1HT  
Will Andrews E: andrews@countiesuk.org

**Hampshire Counties Report evening**

Monday 17 October 7:45pm  
Duncan Road Church, SO31 1BD  
www.drchurch.info T: 01489 582395

**Counties Essex Support Group**

Friday 4 November 8.00pm  
Broomfield Road Evangelical CM1 1RY  
Stephen Hall T: 01245 471019

**Science & Belief: The Big Issues, with Professor Russell Stannard**

4 November 8.00pm Hockliffe Street  
Baptist, LU7 1EZ T: 01525 371 312

**Church Planting Initiative Consultation**

Wednesday 16 November  
Hollywood Centre, Birmingham

# Friendship through marmite



We visited a couple of Bosnian families, enjoying their rose petal cordial and Turkish coffee. Jo translated as we spoke to a local man who described being under siege in his house for 6 months during the war, and having to crawl in the undergrowth from house to house to avoid the snipers.

Our evenings were spent chatting through the day’s events, and finding how Jo managed living in a different culture. We discovered how

**As Counties workers in Wiltshire for twelve years we’ve come to realize that real encouragement can make a difference to our motivation and ministry.**

People coming alongside, expressing genuine interest, helping with projects, ringing up for prayer requests or just saying “I’ll do that for you” can share the burden, lighten the load and put a spring back in our step.

Recently we decided to go and see a missionary friend, Jo, in Bosnia. The drive from Dubrovnik revealed that Bosnia has the most beautiful alpine landscape but the evidence of the past war is everywhere with bullet holes in buildings, landmine signs and shelled houses scattering the landscape.

It is difficult to evangelise openly, so the team are involved in social care projects, teaching English; children’s and youth work; visiting families and building relationships in the hope of sharing the gospel. It was great to be part of planting the cauliflowers, squash and courgettes for the latest project.

important the pot of Marmite was that we’d sent to her, and the small packages received with crazy English things in them!

We only spent 5 days in Bosnia but we begin to understand the difficulties Jo faced and we saw the patience with which the team work learning the language and building relationships that will hopefully come to fruition.

Jo now has friends who know how she lives, where she works, who she mixes with, what her multicultural church is like, what she’s eating and can share something of the trials and joys she faces each day. Isn’t that real partnership?

We may not be able to work right alongside someone each day or do what they do, but we can show loving interest in their work, make a visit, be part of the team.



**Jonathan & Heather Brain**  
Wiltshire  
T 01249 783 422  
E brain@countiesuk.org

## 2012 Day Conference Saturday 3 March

**Programme to include:**

- Worship
- Youth & Children’s programmes
- Bible Teaching & Training from Counties Evangelists

## Seniors



**Tom & Madelene Bathgate**

Give thanks for the health to be

active for the Lord, have joined with of Counties ‘Seniors’ and others at the Sizewell Hall ‘Over 50’s’ holiday in June.

They continue in ministry opportunities whenever they can including Bible teaching, Outreach suppers, Family Services, Torch Trust meetings, Sheltered Housing events, Friends & Neighbours Tea meetings, and a recent Gospel outreach meal with ex-offenders present.



**Dick & Betty Saunders**

‘Way to Life Radio’ Ministry has

continued for over 47 years, with 1000 programmes transmitted each month! Dick & Betty give thanks for:

- Broadcasts around the world, including daily opportunities via short-wave, medium-wave and satellite.
- 154 radio broadcasts each month across Africa & twice/day across India.
- The prayers and support of the ministry, which cover transmissions costs.
- Local ministry at Gordon Road Evangelical Church (Hailsham) during the past 20 years, where Dick preaches and Betty leads the ladies meetings.



**John & Hettie Hall**

John & Hettie give thanks for God’s continued blessings.

In 2006 John was diagnosed with multiple myeloma (cancer of the bone marrow). John gives thanks that after a change in his medication last year, the cancer has been in such remission that he has not had to receive any medication for more than 12 months. Praise the Lord.

John & Hettie continue ministry with local Morning Services, Family Services and Ladies’ Fellowships.

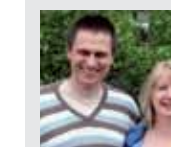
# Partnerships in prayer



**When you’re in the car, driving to a school to do an assembly or classroom event, it can be easy to let thoughts of discouragement fill your mind – why am I doing this, what if they don’t behave, will I have any lasting affect?**

However, knowing that there are a host of fellow believers praying for you can be the encouragement that pushes you to step out in God’s strength and power.

David Brown, one of our Evangelists in the West-Midlands, has first-hand experience of how encouraging it can be to have a partnership with people who are supporting you from behind the scenes. David will often send out a quick email before he heads off to an event, knowing



**David & Lindsey Brown**  
West Midlands  
T 01902 656 996  
E brown@countiesuk.org

that those receiving the message will be interceding on his behalf. He’s also encouraged by one generous lady who has been providing him with a regular gift ever since he started his evangelistic work. God uses partnerships like these to keep our spirits up when discouragement looms.

Partnerships can be fundamental to projects. For example, Counties Exhibitions LIFE and GSUS Live don’t just drop out of the sky at each venue they visit, fully

assembled and equipped. Teams of willing people are needed to set up and maintain these resources, as well as those who provide the funding that keeps them in operation. David is currently working with three local churches to ensure that GSUS Live can reach as many young people as possible, an impossible task to take on without the support of others.

David also recalls the fantastic generosity of many of his prayer partners, who heeded his request for donations to the Bible Explorer book scheme, adding financially support to their already invaluable prayers.

# One door closes another opens

In recent months, we know of at least three churches that have taken the really difficult decision to close their doors. Having faithfully witnessed in a locality for generations the sale of their premises

will enable Counties to continue gospel ministry in many different places. These unexpected gifts enable Counties Trustees to extend their vision and develop strategically.

## Where We Are

1. Charles & Elizabeth Addoco  
Heather Smith
2. Will & Lynne Andrews
3. Tim & Joy Ayrton  
Tony & Ruth Hood
4. Kevin & Anita Baldwin
5. Jonathan & Heather Brain  
David & Lindsey Brown  
Andy & Isobel Hodson (CPI)  
Paul & Vanessa Willmott
6. Tim & Katrina Cracknell (CPI)
7. Colin & Linda Johnson
8. Mike & Su Strange (National)  
Matt & Claire Merriam (CPI)
9. Tim & Charissa Cooke (National)
10. Ivor & Angela Cooper  
Bob & Rita Telford (National)
11. Clive & Fiona Cornish  
Mike & Janet Thomas (ETP)
12. Gordon & Penny Curley
13. Ray & Carol Dadswell
14. Phil & Sheila Davies
15. Martin & Rachel Erwin
16. Stephen & Jean Gillham  
Ian & Sally Carr (ETP)
17. John & Rachel Hardwick (National)
18. Benjamin & Chiara Hersh (ETP)
19. James & Naomi Richards (ETP)
20. David & Katie Symons
21. Robert & Sarah Watson

ETP - Evangelists Training Programme  
CPI - Church Planting Initiative

There are also 11 ‘Seniors’ who are over 65.

Tom & Madelene Bathgate  
Geoff & Isobel Carr  
Roger & Hazel Chilvers  
Lionel & Mavis Clargo  
Victor Jack

Andy & Miriam Jelfs  
John & Hettie Hall  
David & Wendy Iliffe  
John & Jane Martin  
Dennis Pierce  
Dick & Betty Saunders



Pray for our ‘vacant’ counties.